

## **Intermediate Soul Reading, part three: Extending the Basic Soul Reading**

Our advanced webinar today will continue the study of the Basic Soul Reading (BSR), and how it can be extended to give additional information relevant to the querent's guidance. As we have discussed, the BSR is central to all spiritual counseling in the Mudrashram® system of Integral meditation, and forms the foundation of knowledge to which further metaphysical insights can be related.

In our previous webinar of this intermediate Soul Reading series, we learned about doing the Seed Thoughts for Meditation Reading, the Spiritual Heart Reading, and the Karma Reading—each of these readings use the centers of the Soul's essential vehicle to gather information for the querent.

This webinar will explore the following additional topics and readings that arise from shifting your meditation focus to study your querent in new ways:

- Identifying the themes of expressed Soul Purpose
- Identifying correct spiritual practice, based on a knowledge of the where one is on the Continuum
- Path Progression, noting what will happen if one pursues a given spiritual path
- Meditation Analysis Reading
- Identifying the querent's unique Soul gifts
- Departed loved ones reading, noting where they dwell on the Continuum, and where they will reincarnate (a derivation of the future lives method of the Basic Soul Reading)
- Career Guidance Reading
- Relationship compatibility reading
- The medical intuitive reading

You will recall that in the first webinar of this Intermediate Soul Reading series, you explored the readings available through the brain center of your psychic vehicle, and traced the track of the Soul's development through the Division in which it dwells, and contemplated the relative spiritual development at each of the Higher Octaves of Being at Cosmic, Supracosmic, and Transcendental Octaves.

In the second webinar of this series, you did readings based on the centers of the Soul's essential vehicle.

In this webinar, you will learn about shifting your attention to contemplate additional centers, and glean new information from meditating upon your querent and your querent's loved one. Our objective today is to help expand your horizons of what you may believe is possible for a subject of a spiritual reading. Let us begin.

## **Identifying the Expressed Soul Purpose of Your Querent**

In our first intermediate Soul Reading class, you learned to track the Adi Karma for your querents, and to identify the major milestones of their *intrinsic Soul Purpose*. To meditate upon expressed Soul Purpose, you contemplate the Manasic Vortex and notice what is the content of each Ray. In those querents, who have a Crown of Purpose, these rays will appear as radii in that torus.

These rays will appear in one of three ways.

1. It will be completely darkened [this is an undeveloped ability]
2. It will be partially darkened [this is an ability that is being developed]
3. It will be fully purified to the core [this is an ability that the Soul has fully developed, and it is in active expression]

You will learn to do this reading for others by first doing it on yourself. For this meditation, you will contemplate your Manasic Vortex through the mirror of your experience.



First, you will find anchors in your life experience.

Think about something you do that seems core to your experience that you do very well. Feel the correction of this ability to your Soul's higher will.

Think about something you do that you have been learning, but have not become proficient in it. Feel the correction of this ability to your Soul's higher will.

Think about something you do feel you want very much to learn, but have not have had the time or resources to pursue it up to this point in your life. Feel the correction of this ability to your Soul's higher will.

Feel the current connecting you with your transpersonal octave of will. You will follow the 1st Ray track back to this vortex within the thalamic center of your Soul's essential vehicle [it's the stream on the left side]. You will contemplate the Soul's abilities at this level, and notice which the Soul appears to animate.

Once you can do this and gain some information from the vortex of the transpersonal will, you can move to the more advanced practice is to move from this center to contemplate the rays coming from your Manasic vortex. You dip your attention into the stream of each ray, and note what images, impressions, and feelings arise for you as focus there, and write them down.

When you get clear guidance for yourself using these means, you can then contemplate the vortex of the transpersonal will and the Manasic Vortex in others.

### **Meditation Guidance – Identifying Appropriate Meditation**

If you plan to become a teacher of Integral meditation, you will need to learn this skill. It comes very naturally, once you identify where someone’s Soul is on the Continuum through a Basic Soul Reading. Here are some examples drawn from the Lower Subtle to the Wisdom Plane:

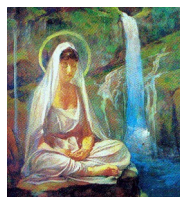
Plane	Subplane(s)	Associated Meditation Practices
Lower Subtle	All	<ul style="list-style-type: none"> <li>➤ Contemplate the Soul Spark</li> <li>➤ Meditate upon your roles in the Mythological Bands</li> <li>➤ Contemplate the Kosas and the forms in the Subtle Astral and Subtle Causal Planes</li> <li>➤ Notice the activities that arise from the Lower Subtle octave of will</li> </ul>
Middle Subtle	All	<ul style="list-style-type: none"> <li>➤ Contemplate the Soul Spark</li> <li>➤ Meditate upon the forms in each Subplane of the Middle Subtle</li> <li>➤ Notice the activities that arise from the Middle Subtle octave of will</li> </ul>

*A Webinar of the Mudrashram® Institute of Spiritual Studies*

Plane	Subplane(s)	Associated Meditation Practices
Lower Astral	All	<ul style="list-style-type: none"> <li>➤ Contemplate the Soul Spark</li> <li>➤ Meditate upon your forms in each level of the Middle Subtle</li> <li>➤ Learn to build the Armor of Light</li> <li>➤ Notice the activities that arise from the Magical will</li> <li>➤ Contemplate the Light of Renunciation at the top of the Lower Astral Plane</li> </ul>
Subtle Illumined Mind (Intellechy)	All	<ul style="list-style-type: none"> <li>➤ Contemplate the Soul Spark</li> <li>➤ Contemplate the form of the wizard here and notice its abilities</li> <li>➤ Contemplate the geometrical forms from seven to one</li> <li>➤ Contemplate the four letters of the sacred name of God [YHVH]</li> </ul>
Biophysical Universe	All	<ul style="list-style-type: none"> <li>➤ Contemplate the Soul</li> <li>➤ Meditate upon your forms in each level of the Biophysical Universe</li> <li>➤ Contemplate your form in Etheria and where you are on the Etheric Grid</li> <li>➤ Notice the activities that arise from the Biophysical octave of will</li> </ul>



Plane	Subplane(s)	Associated Meditation Practices
Abstract Mind Plane	Body-Mind Programming	<ul style="list-style-type: none"> <li>➤ Visualization</li> <li>➤ Autohypnosis</li> <li>➤ Autogenics™</li> <li>➤ Biofeedback</li> </ul>
	Temple of Science	<ul style="list-style-type: none"> <li>➤ Using the scientific method and data analysis</li> <li>➤ Turning theory into inventions and new technology</li> </ul>
	Temple of Art	<ul style="list-style-type: none"> <li>➤ Aesthetic contemplation</li> <li>➤ Contemplate alternate perspectives</li> <li>➤ Tap into the creative stream for ideas in your chosen art forms</li> </ul>
	Temple of Philosophy	<ul style="list-style-type: none"> <li>➤ Philosophical and process style inquiry</li> <li>➤ Detailed analytical thinking</li> </ul>
	Akashic Records	<ul style="list-style-type: none"> <li>➤ Process meditation</li> <li>➤ Meditate upon your current and past lives</li> </ul>
	Dynamic Creation	<ul style="list-style-type: none"> <li>➤ Insight and empowerment processes</li> </ul>
	Universal Mind Subplane	<ul style="list-style-type: none"> <li>➤ Affirmation</li> <li>➤ Contemplation of the Laws of the Universal Mind</li> </ul>



Plane	Subplane(s)	Associated Meditation Practices
The Psychic Realm	Materialization Dematerialization	<ul style="list-style-type: none"> <li>➤ Contemplate the Law of Attraction</li> <li>➤ Use intention to create and dissolve conditions in life</li> </ul>
	Psychic Powers	<ul style="list-style-type: none"> <li>➤ Contemplate the psychic powers and practice them</li> </ul>
	Healing	<ul style="list-style-type: none"> <li>➤ Study the intuitive arts and alternative healing methods, learn to practice them,</li> <li>➤ Learn a Radiative healing modality</li> </ul>
	Heavenly Realms	<ul style="list-style-type: none"> <li>➤ Contemplate the forms of your guides</li> <li>➤ Learn to receive and speak (channel) telepathic guidance</li> <li>➤ Contemplate the astral dimensions, angels, and other spiritual beings</li> </ul>
	Pleiadean Vortex	<ul style="list-style-type: none"> <li>➤ Contemplate your “star body”</li> <li>➤ Learn to receive and speak telepathic guidance</li> </ul>
	Astral Forms	<ul style="list-style-type: none"> <li>➤ Contemplate the astral shells of historical figures</li> <li>➤ Learn to receive and speak telepathic guidance</li> </ul>
	Psychic Guide	<ul style="list-style-type: none"> <li>➤ Merge your astral body into the Light at the top of the Psychic Realm</li> <li>➤ Conduct guided meditations for others</li> </ul>

Plane	Subplane(s)	Associated Meditation Practices
Wisdom Plane	Life Lesson	➤ Contemplate the seeds you have planted in your life and the outcomes from what you have sown
	Life Revision	➤ Contemplate what you wish to create in your life, and what you wish to remove
	Life Re-Creation	➤ Actively root out negative tendencies of mind, replacing them with positive seeds
	Karmic Law	➤ Contemplate the principles of the Law of Karma
	Forgiveness	➤ Meditate upon the seven themes of forgiveness
	Understanding	➤ Meditate on the seven themes of forgiveness
	The 12 Houses of Wisdom	<ul style="list-style-type: none"> <li>➤ Meditate upon the 12 sages and the houses of wisdom</li> <li>➤ Contemplate the seven-storied pagoda of wisdom, your form on this Plane</li> </ul>

As you gain spiritual experience in the higher Planes, you will recognize the types of meditation that help you understand and utilize the content of each level. [Those of you who have made progress through multiple bands of the Continuum studying with Mudrashram® can peek at your meditation guidance notes you got at each level. Those of you who have it, can review the Mudrashram® Correspondence Course.]



## **Path Progression**

Those of you who have the Mudrashram® Correspondence Course will find a description of each level of the Continuum and each path in the Supracosmic and the Transcendental Spheres. You can use this as a foundation to study different scenarios. For example:

- What would happen if someone awakened cosmic consciousness along its track? Where would they ultimately end up? What type of imbalance might they create for themselves?
- What would happen if someone awakened a Supracosmic seed atom upon a Supracosmic Path? Where would they ultimately end up? What type of imbalance might they create for themselves?
- What would happen if someone awakened the spirit of one of the Transcendental Paths? Where would they ultimately end up? What type of imbalance might they create for themselves?

Once you have mastered tracking through the unconscious mind doing a Soul Purpose Reading or a Karma Reading, you can extend this ability to contemplate the paths behind any nucleus of identity, any spirit, or any ensouling entity. Whatever meditation your querents might have learned in a particular spiritual tradition, you can look ahead on the Path and see what the consequences for them will be—where it will lead them, and whether this will create an imbalance.

## **Meditation Analysis Reading**

Many aspirants don't know what they are getting themselves into when they get initiated into meditation. As an adjunct to understanding the different meditations that are appropriate at each level of the Continuum, you can also analyze each meditation technique advocated in different spiritual traditions to see what it actually does.

Here is the template I use to study this:

**Analysis of Meditation Technique(s) Reading**

Name of Technique	
Factor	Results of Your Technique
Attentional Effect	
Core Energetic Effect	
Spiritual Effect	
Volitional Effect	
Transformational Effect	
Noetic Effect	
Balancing Impact	
Intuitive Effect	
Channeling Effect	
Character Effect	
Projected Consequences for Practice of the Technique	
Projected Impact of the Imbalances Created by the Technique (If Applicable)	
Recommendations for Appropriate Meditation and Relevant Groups of Teachings for Your Spiritual Cutting Edge	

As you become more confident with meditation, you will be able to explain what each technique does, how it impacts the essences of consciousness, the vehicles of consciousness and the personality. [Some aspirants would have a real wake up call if they knew what that exotic and mysterious meditation they learned is actually doing to them!]

## Unique Spiritual Gifts Reading

Do you remember the meditation you did in the Mudrashram® Advanced Course in Meditation on your Soul's abilities and powers? Could you do this for another person? If you can, you can do a unique spiritual gifts reading.

This identifies what abilities are active in your querent. This might take the following form:

Identified Ability	Relative awakening (0-100%)	Ways to augment this ability (if relevant)
Example: Playing a musical instrument	30%	Take music lessons, practice on a regular schedule, play the instrument at parties or with friends
Example: Writing	70%	Set aside a regular time and place to write, take writing classes in college, create chapter outlines, publish a book

Could you do this? You may wish to experiment by using this template with yourself first.



## **Departed Loved One Reading**

Are you ready to get woo-woo? How about doing a reading for those who have passed on beyond the veil of death? Does that seem like a challenge?

You might be surprised to know you have already gained many of the skills to do this. Can you, for example:

- Find the Soul of an individual?
- Can you locate their attentional principle on the inner Planes?
- Can you contemplate the environment where their attentional principle dwells and describe it?
- Can you look at the brain center in their psychic powers vehicle of consciousness and view their next out-pictured human life?
- Can you get some clues from those images you see to identify where this is [e.g., what country]? What time frame this is [e.g., what year might they reincarnate]? Can you give any information about that life [e.g., what they might do in that life, or what career they might pursue]?

Could you do a reading like this? [I have done this privately for friends and loved ones.]

## **Career Guidance Reading**

If you have been listening to each of the webinars in this series, you will recall that in the third webinar, we discussed looking at the patterns and interplay of the Rays, so you can tease out characteristics of the individual you are reading, and write down your impressions in a report.

Consider our example of John, whose Soul was in the Temple of Science Plane. We looked at his Ray characteristics, and noted that he had a makeup similar someone who was a principal, or a college professor.

We identified where his Soul was on the Continuum. We discovered what were his Soul, Personality, Mental, and Emotional Rays, and put them together.

So what might you conclude about a potential career for someone who has the following constellation?

- (1) Soul is in the Temple of Art, 2nd Ray Soul, 2nd Ray personality, 3rd Ray Mind, and 2nd Ray Emotions?
- (2) Soul is undergoing the 1st Exoteric Initiation, has a 6th Ray Soul, 7th Ray personality, 3rd Ray Mind, and 2nd Ray Emotions?
- (3) Soul is in the Psychic Realm Healing Subplane at the 14th nodal point, with a 7th Ray Soul, 3rd Ray Personality, 3rd Ray Mind, and 6th Ray Emotions?
- (4) Soul is taking the 2nd Initiation on the Battle of Good and Evil Subplane, with a 2nd Ray Soul, 6th Ray Personality, 3rd Ray Mind, and 6th Ray Emotions?

What did you come up with? Could you see this as the profile of a

- (1) Music teacher
- (2) Television evangelist or gospel singer
- (3) Someone who systematizes a healing system or intuitive arts program, and only reveals it to those who join his inner circle
- (4) A journalist who is involved with unearthing corruption in the government, who is conducting a secretive investigation

As you think through some of the different combinations of Rays in the context of discrete locations on the Continuum, can you see how this could color the career choice of an individual?

Could you use this method to help discover a career that matches their unique talents? [For select individuals, I will often include career profile information in their Basic Soul Reading report.]

## Relationship Compatibility Reading

What if you did a Basic Soul Reading for each member of a couple, and then compared them? Could you tease out compatible Rays and incompatible Rays to determine their affinity? Could you meditate on the dynamic matrix between them to uncover their relative compatibility?

Here's the template I use.

You	
Spiritual Evolution	
Ray Type	
Karmic Challenges or Obstacles to Be Overcome In This Relationship	
Strengths You Bring to the Relationship	
Your Partner	
Spiritual Evolution	
Ray Type	
Karmic Challenges or Obstacles to Be Overcome in This Relationship	
Strengths He or She Brings to the Relationship	
Compatibility Factors	
<i>Attraction Factors</i>	
Life Style	
Sexuality	
Emotional	
<i>Core Factors</i>	
Shared Interests	
Shared Values	
Shared Vision for the Future	
<i>Metaphysical Factors</i>	
Affinity	
Destiny	
<b>Impressions</b>	

To learn more about these compatibility factors and affinity, these articles are in the last chapter, “Soul Mates,” in the book, *The Psychic Realm: Finding Safe Passage through the Worlds of Illusion*. Some of these articles may also be found on our website in the Psychic Studies section of our Reading Room.

## **Medical Intuitive Reading**

Normally the heart chakra of your vehicle of consciousness on the Psychic Powers Subplane spins clockwise, which enables you to channel healing energy to others. Those of you who took our Psychic Powers Workshop as a webinar know that the direction of this current can be voluntarily reversed, so that it spins counter-clockwise.

What happens when this occurs? Instead of sending healing energy, you experience heightened sensitivity to the etheric body of others. If you have knowledge of anatomy and physiology, you can identify the shadows and blockages in the etheric body that correspond to physical organs. For example, a person who has a dark brown or black color in the liver area may have a disease of the liver.

A medical intuitive learns to interpret which each blockage and associated color means, and can communicate this to the querent. Some medical intuitives work with other healing arts professionals to guide them to intervene in the querent’s core health issues, which may not otherwise be detected in routine tests or exams.

I hope that you have been inspired by some of the different possibilities for readings. As we have reviewed these readings today, I encourage you to reflect on these extensions of the Basic Soul Reading. You need to determine which ones fit with your own metaphysical and healing ministry, and which spark inner recognition and affirmation from your Soul.

Thank you for attending our webinar today!

